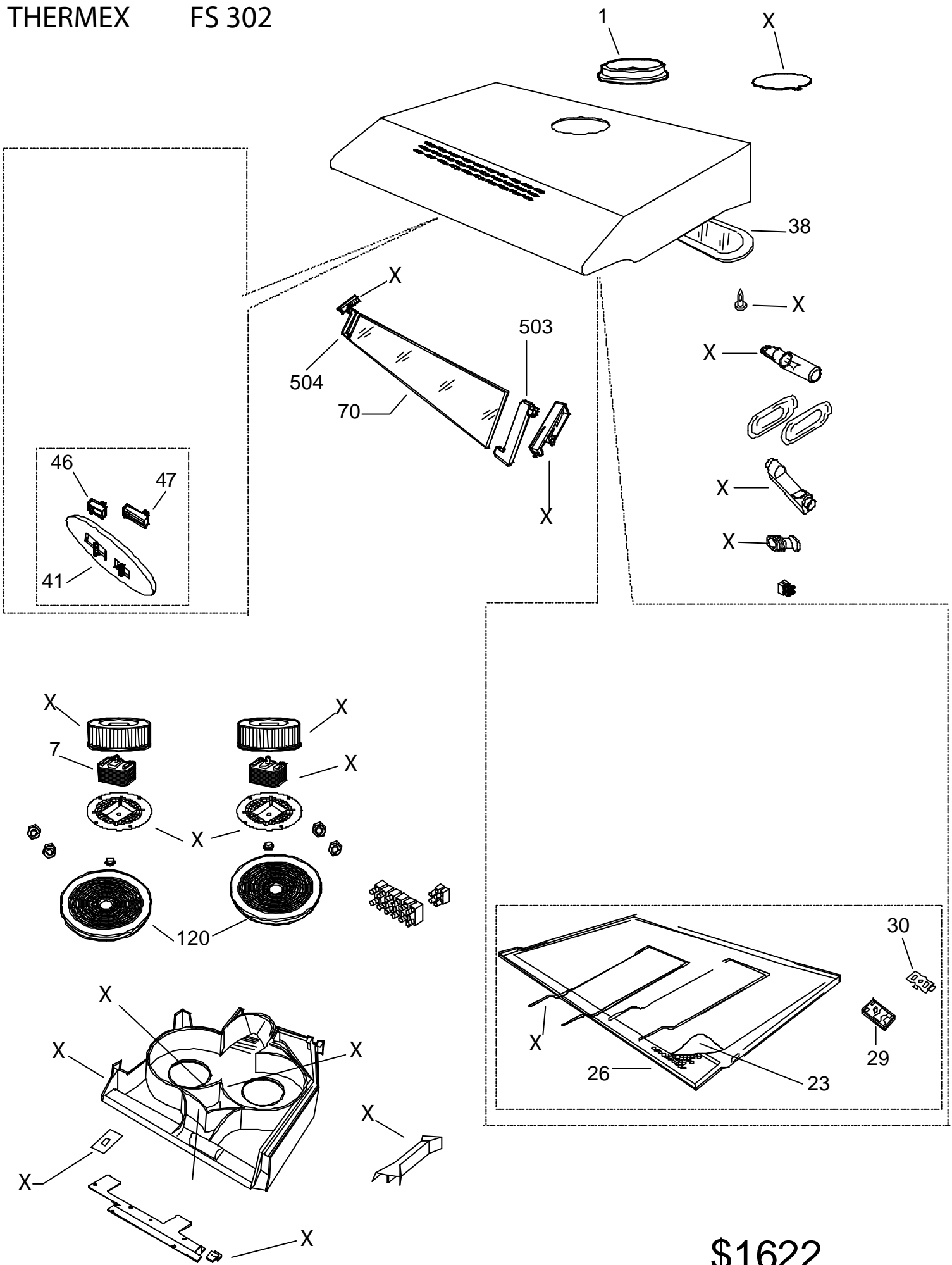


THERMEX

FS 302



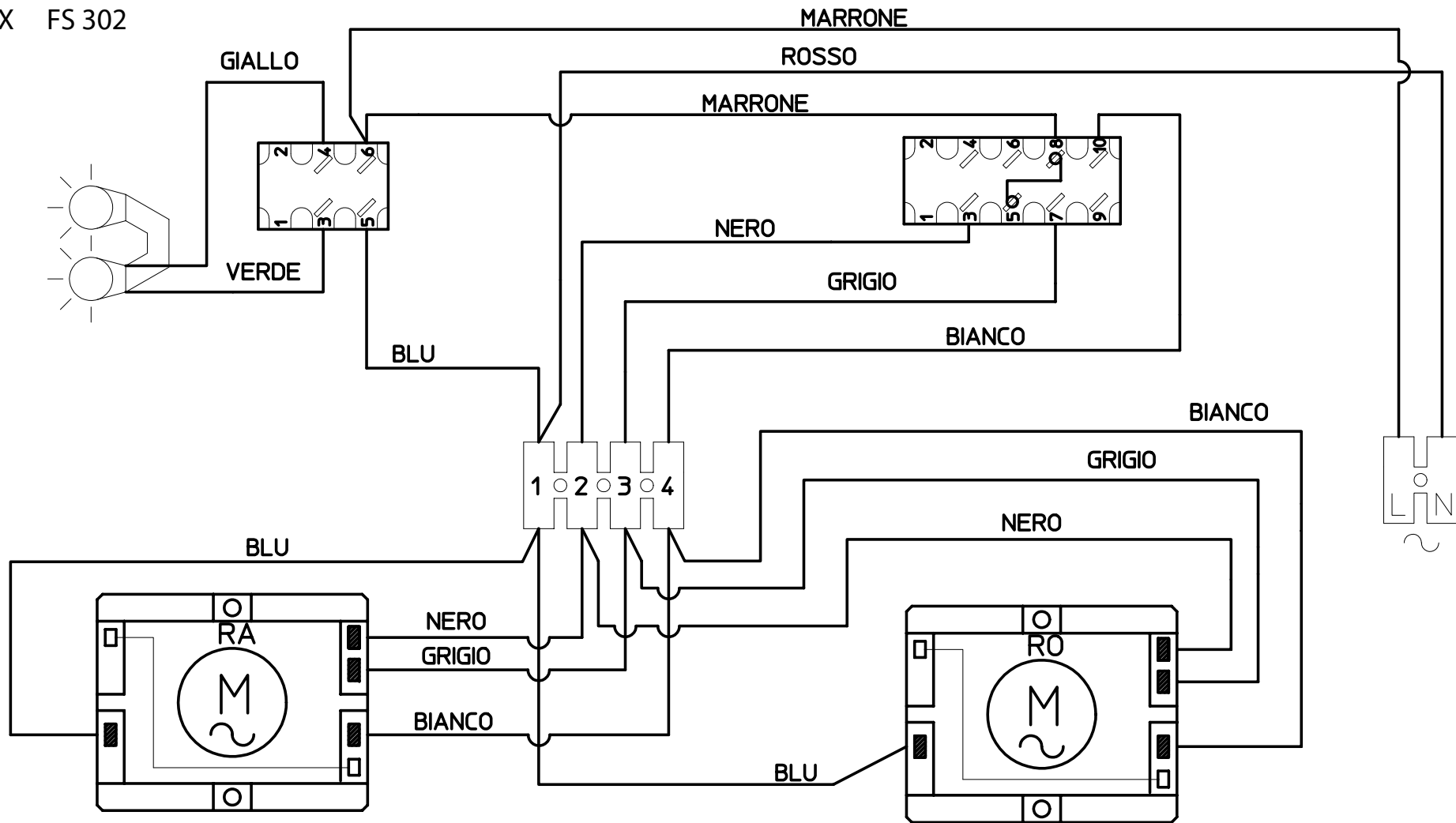
\$1622

THERMEX

SPAREPART LIST FS 302

Position	Code	Thermex Code	Description
1	3010BF	R520.25.3014.0	FLANGE
7	E0272	R520.25.3006.0	MOTOR
23	F0247	R520.25.3005.0	GREASE FILTER
26	D44	R520.25.3002.0	GRID
29	P0442	R520.25.3013.0	KNOB
30	40700M	R520.25.3000.0	GRID FIXING PLATE
38	V020	R520.25.3004.0	LAMP COVER (SQUARE)
38	PF01CA	R520.25.3017.0	LAMP COVER (ROUND)
41	PA0321	R520.25.3010.0	FRONT PANEL
46	10101032610	R520.25.3015.0	LIGHT SWITCH
47	10101032630	R520.25.3016.0	MOTOR SWITCH
70	V305	R520.25.3003.0	FRONT GLASS
120	KF25	535.25.4000.9	CARBON FILTER 1-MOTOR
120	KF26	535.25.4100.9	CARBON FILTER 2-MOTOR (2 PCS)
503	3028GP	R520.25.3009.0	GLASS VISOR (RIGHT)
504	3028GQ	R520.25.3008.0	GLASS VISOR (LEFT)
X			No Spareparts

THERMEX FS 302



25/09/2002	Aggiornato	Cordovani
28/10/1998	invertita posizine simboli neutro linea	Mattioli
DATA	DESCRIZIONE MODIFICHE	NOME
THERMEX FS 302		CLASSE 2
MODELLO FS302-401-402 GM 3V 2LAMP		CODICE 85
PARTICOLARE SCHEMA ELETTRICO		
DATA 17/11/1997	NOME Mattioli	